

The Building Blocks of an Accompaniment

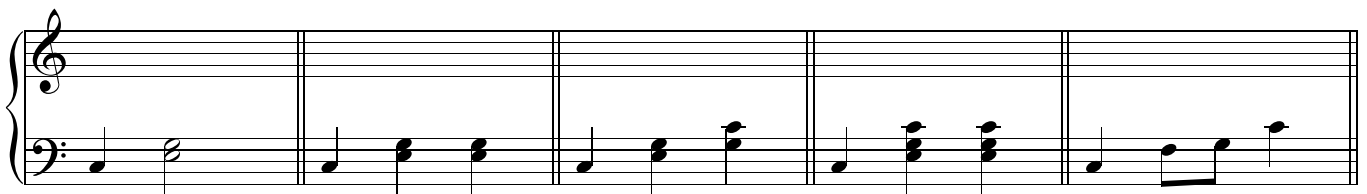
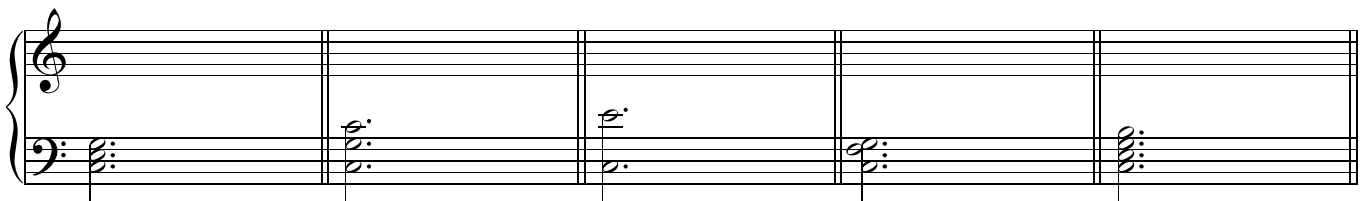
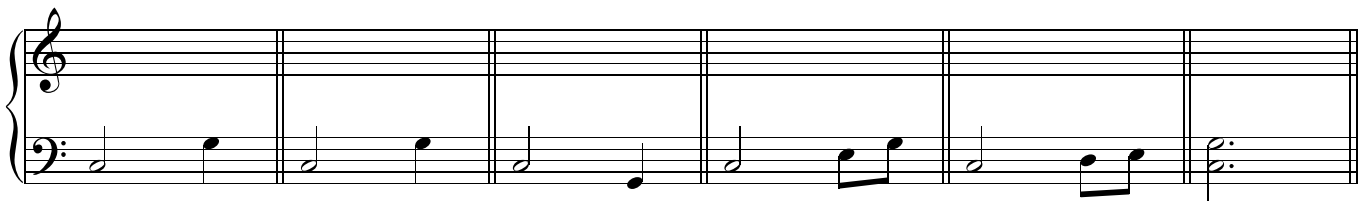
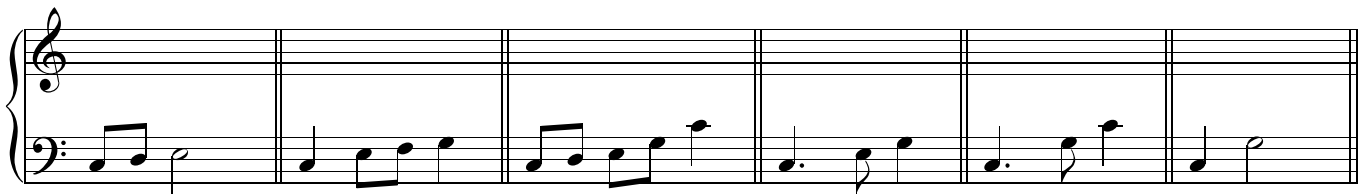
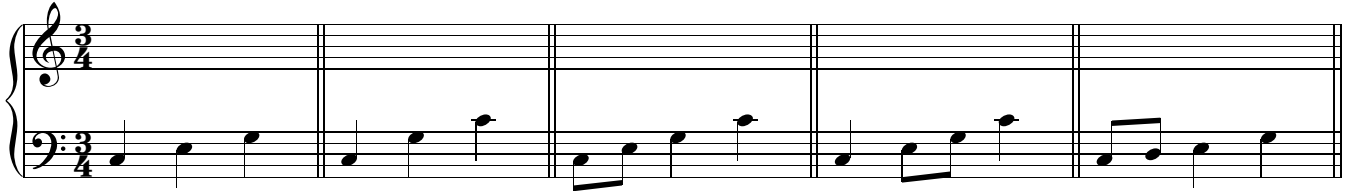
Each bar contains a brick of information based on the chord of C major (CEG)

These are starting points only!!!

An accompaniment would be deadly boring if you used only one block of information and only changed the chords (eg - bar one in C, G, F, Cyawn), but it would also be far too busy if you used different blocks and different chords in every bar you have to make a nicely balanced accompaniment.

These are just some of the many, many blocks you can use as accompaniment. I've only laid these out in an ascending way - you can try any of these as descending patterns too.

Don't forget it often depends which chord you are moving on to in the next bar (or half bar), as to the block you pick some lead better into other chords.....you can adapt any of these ideas to suit the music you are arranging.



You can also adapt all these ideas for use in other time signatures

etc - you get the idea!

Now have a look at my four bar example with the chords C, Am, F, G (i, vi, iv, v) and the variety of ways we can simply accompany the simple tune.

I know you have already memorised the tune, so I'm not going to write it out again.... try the different bass lines.

All just ideas now go and arrange some of your own!